

# **UKLP Metadata Working Group**

## **Report to MEDIN Standards Committee**

Version 1.1

2009-11-20

PROJECT NUMBER:			DOCUMENT REF:		
Version 1.1	JR				2009-11-20
Version 1.0	JR				2009-11-18
Purpose / Description	Originated	Checked	Reviewed	Authorised	Date

## CONTENTS

<b>EXECUTIVE SUMMARY</b>	<b>II</b>
<b>1. INTRODUCTION</b>	<b>1</b>
1.1 Scope	1
1.2 Terminology	1
<b>2. UK LOCATION PROGRAMME</b>	<b>1</b>
2.1 Introduction	1
2.2 Organisation Model	1
<b>3. GEMINI VERSION 2.0</b>	<b>2</b>
<b>4. METADATA WORKING GROUP</b>	<b>2</b>
4.1 Introduction	2
4.2 Proposed Terms of Reference	2
4.3 Future Work Areas	3
<b>5. FUTURE MEETINGS</b>	<b>3</b>
<b>ANNEX A METADATA WORKING GROUP</b>	<b>4</b>
A.1 Terms of Reference	4
A.2 Membership	4
 <b>List of Tables</b>	
Table 1 – Terminology	1
Table 2 – MWG Membership	4
 <b>List of Figures</b>	
Figure 1 – Metadata Working Group in the Context of the UKLP	2

## **EXECUTIVE SUMMARY**

Comments are requested by 18<sup>th</sup> November 2009 on the form of words for the recommendation of GEMINI2 as the metadata standard for UKLP. See section 3. My recommendation is that no comments are necessary.

James Rapaport has been nominated to manage a work item investigating the determining the appropriate schemas for supporting the encoding and validation of UKLP metadata. See section 4.3.

## 1. INTRODUCTION

### 1.1 Scope

James Rapaport is representing MEDIN on the UKLP Metadata Working Group. The first meeting of the working group was held on 2009-11-16. This document is the report of the meeting.

### 1.2 Terminology

Table 1 lists the terms that are used in this report.

**Table 1 – Terminology**

IR	Implementing Rule
LIIB	Location Information Interoperability Board
MWG	Metadata Working Group
UKLC	United Kingdom Location Council
UKLP	United Kingdom Location Programme <sup>1</sup>
UKLS	United Kingdom Location Strategy

## 2. UK LOCATION PROGRAMME

### 2.1 Introduction

The UKLP has been established to implement both the UK Government's Location Strategy and the INSPIRE Directive. The lead department is Defra.

### 2.2 Organisation Model

The MWG is shown in the context of the wider UKLP organisation model in Figure 1. The Location Council will oversee the design, development and operation of the UK location infrastructure. Membership is drawn from a wide range of stakeholders.<sup>2</sup> The LIIB is a technically oriented board which will oversee and drive the implementation of the data and interoperability standards in conjunction with the INSPIRE IRs. The board may co-opt short term working groups to progress and resolve topics. The MWG is an example of such a group.

---

<sup>1</sup> <http://www.defra.gov.uk/location/index.htm>

<sup>2</sup> <http://www.defra.gov.uk/location/governance.htm>

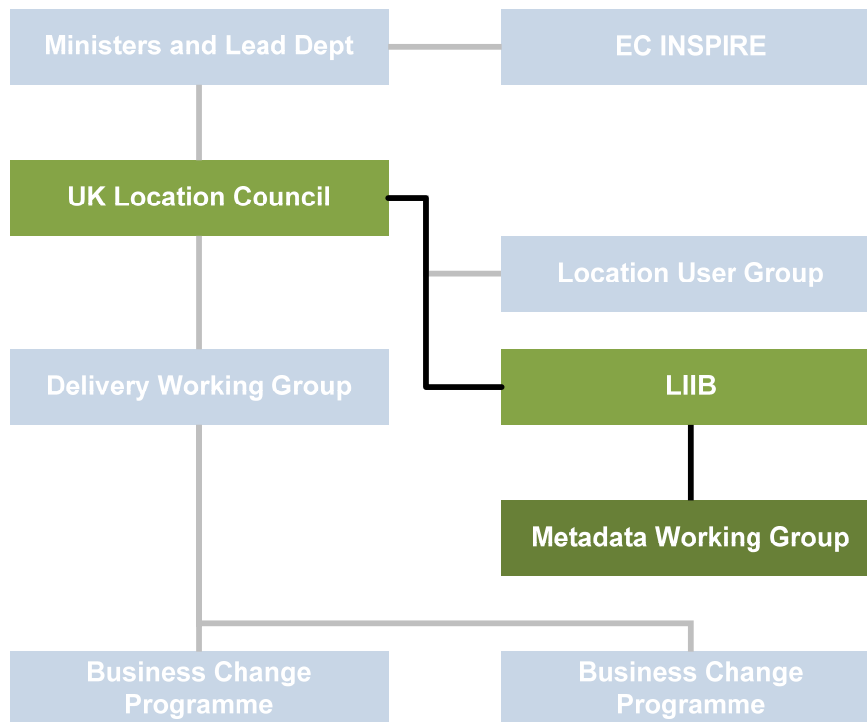


Figure 1 – Metadata Working Group in the Context of the UKLP

### 3. GEMINI VERSION 2.0

The LIIB will recommend to the UKLC that GEMINI2 is adopted as the metadata standard for the UKLP. This decision was taken before the first meeting of the MWG. The recommendation is as follows:

Adopt GEMINI2 as the discovery metadata specification for the United Kingdom. The mandatory fields for INSPIRE [discovery] metadata and GEMINI2 are the same except that GEMINI2 holds two additional fields.

The MWG has been asked to comment on the form of words by 18<sup>th</sup> November 2009. It is felt that this form of words is acceptable and that no comments are necessary from MEDIN.

The recommendation will be made at the next meeting of UKLC on 4<sup>th</sup> December 2009.

## 4. METADATA WORKING GROUP

### 4.1 Introduction

The MWG is constituted as a “self managing group”. As such no terms of reference were defined for it. The group is responsible for setting its own terms of reference within the scope of the requirements for INSPIRE metadata and requirements of UKLP in respect of metadata.

The membership list of the MWG is presented in Annex A Table 2.

### 4.2 Proposed Terms of Reference

The following terms of reference have been proposed:

1. Provide advice to UKLP
2. Resolve technical issues
3. Commission guidance
4. Interface with the European Council Metadata Working Group

5. Provide support and communication
6. Translate technical documents to plain English

It is to be noted that specific deliverables are not identified as part of this proposed list.

### **4.3 Future Work Areas**

The following work areas have been identified:

1. Guidance – review existing and, where necessary, develop new guidance for metadata use within UKLP. Only discovery level metadata was considered during the meeting but deeper metadata, for validation or data use, was not explicitly ruled out of scope.
2. Profiles – review existing profiles
3. Harvesting – consider processes for harvesting metadata
4. Schemas – define the requirements for encoding and validating metadata
5. Tools – review existing tools for metadata and define requirements for new tools if considered necessary
6. Controlled vocabularies – define requirements for the use of controlled vocabularies

Each work area will be managed by an individual from the MWG. I will be responsible for item 4 – schemas. This should be beneficial to MEDIN because I can ensure that there is close correspondence between MEDIN and UKLP.

## **5. FUTURE MEETINGS**

The schedule of meetings is currently as follows:

1. 17<sup>th</sup> February 2009 (note – one week after next MEDIN standards meeting)
2. 12<sup>th</sup> May 2009
3. 11<sup>th</sup> August 2009

## Annex A Metadata Working Group

### A.1 Terms of Reference

Provide advice to UKLP

Resolve technical issues

Commission guidance

Interface with the European Council Metadata Working Group

Provide support and communication

Translate technical documents to plain English

### A.2 Membership

**Table 2 – MWG Membership**

Member	Representing
Rob Walker	Independent consultant (GEMINI2 principal author)
Ian Coady	Office for National Statistics (Chair)
Gil Ross	Meteorological Office
James Rapaport	MEDIN
Jonathan Sloan	Ordnance Survey Northern Ireland
Kay Pallaris	Olympic Delivery Authority
Keith Murray	UKLP
Michael Warner	Ministry of Defence
Peter Whybrow	Defra
Phil Francis	National Underground Assets Group
Rod Kedge	Countryside Council for Wales
Ross Mackintosh	National Trust
Tim Duffy	British Geological Survey
Anne Rogers	EDINA