

UKLP Metadata Working Group

Report to MEDIN Standards Committee

Version 1.0

2010-04-09

PROJECT NUMBER:			DOCUMENT REF:		
Version 1.0	JR				2010-04-09
Purpose / Description	Originated	Checked	Reviewed	Authorised	Date

CONTENTS

EXECUTIVE SUMMARY	II
1. INTRODUCTION	1
1.1 Purpose of Document	1
1.2 Terminology	1
2. UK LOCATION PROGRAMME	1
2.1 Introduction	1
2.2 Organisation Model	1
2.3 Role of OS	1
3. METADATA WORKING GROUP	2
3.1 Introduction	2
3.2 Proposed Terms of Reference	2
4. GEMINI VERSION 2.0	3
5. POSITION PAPERS	3
6. TOOLS	3
7. FUTURE MEETINGS	3
ANNEX A METADATA WORKING GROUP	4
A.1 Terms of Reference	4
A.2 Membership	4
A.3 Attendees at the 3 rd Meeting	4

List of Tables

Table 1 – Terminology	1
Table 2 – MWG Membership	4

List of Figures

Figure 1 – Metadata Working Group in the Context of the UKLP	2
--	---

EXECUTIVE SUMMARY

The MWG will seek approval from AGI to take on the ongoing management and development of GEMINI2. GEMINI2 will enter configuration management under the UKLP.

The INSPIRE technical guidelines for metadata are being revised and will be published on 15th April 2010. This and some other issues will lead to a requirement to amend GEMINI2. A meeting will be arranged (currently 29th April 2010) to with the purpose of amending GEMINI2. James Rapaport will represent MEDIN at the meeting. MEDIN standards committee members are requested to forward comments to James Rapaport by 27th April 2010. Note however, that the view is that the changes to GEMINI should be slight – do not expect drastic revision.

1. INTRODUCTION

1.1 Purpose of Document

James Rapaport is representing MEDIN on the UKLP Metadata Working Group. The 3rd meeting was held on 8th April 2010. This is a report of that meeting.

Note that the 2nd meeting was held on 23rd February 2010. The meeting reviewed a UKLP paper and there was nothing to report.

1.2 Terminology

Table 1 lists the terms that are used in this report.

Table 1 – Terminology

AGI	Association for Geographic Information
IR	Implementing Rule
LIIB	Location Information Interoperability Board
MWG	Metadata Working Group
OS	Ordnance Survey
UKLC	United Kingdom Location Council
UKLP	United Kingdom Location Programme ¹
UKLS	United Kingdom Location Strategy

2. UK LOCATION PROGRAMME

2.1 Introduction

The UKLP has been established to implement both the UK Government's Location Strategy and the INSPIRE Directive. The lead department is Defra.

2.2 Organisation Model

The MWG is shown in the context of the wider UKLP organisation model in Figure 1. The Location Council will oversee the design, development and operation of the UK location infrastructure. Membership is drawn from a wide range of stakeholders. The LIIB is a technically oriented board which will oversee and drive the implementation of the data and interoperability standards in conjunction with the INSPIRE IRs. The board may co-opt short term working groups to progress and resolve topics. The MWG is an example of such a group.

2.3 Role of OS

According to the Policy Options for Geographic Information from Ordnance Survey consultation report² the Government has asked OS to "take on the technical delivery role of the services that

¹ <http://location.defra.gov.uk/>

² <http://www.communities.gov.uk/documents/corporate/pdf/1528263.pdf>

are required to meet Britain's obligations under INSPIRE" (pp 9). Questions were asked about this. It is clear that the detail alluded to in this statement is yet to be determined.³

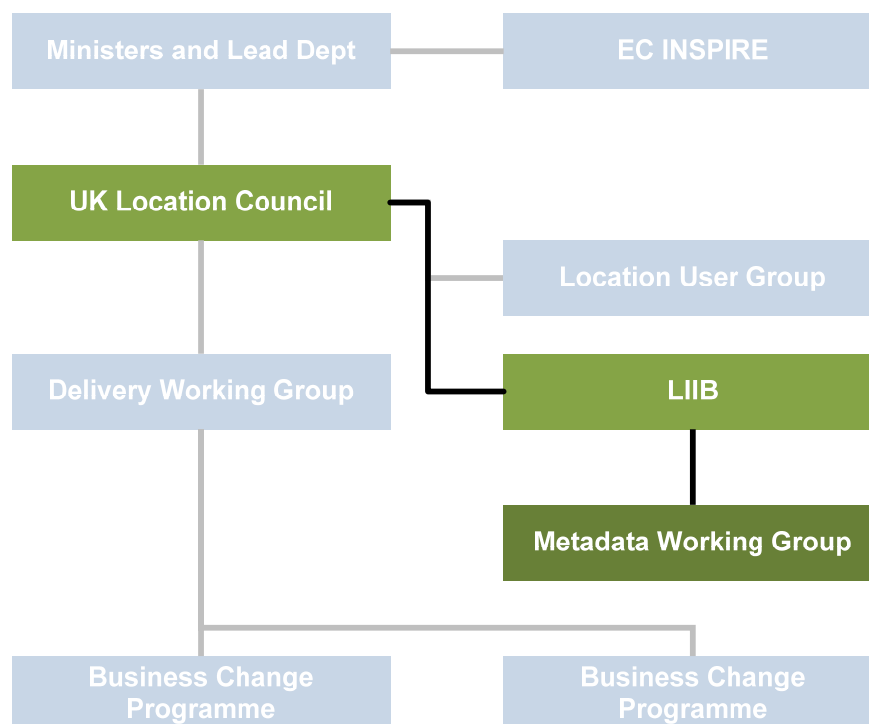


Figure 1 – Metadata Working Group in the Context of the UKLP

3. METADATA WORKING GROUP

3.1 Introduction

The MWG is constituted as a “self managing group”. As such no terms of reference were defined for it. The group is responsible for setting its own terms of reference within the scope of the requirements for INSPIRE metadata and requirements of UKLP in respect of metadata.

The membership list of the MWG is presented in Annex A Table 2.

3.2 Proposed Terms of Reference

The following terms of reference have been proposed:

1. Provide advice to UKLP
2. Resolve technical issues
3. Commission guidance
4. Interface with the European Council Metadata Working Group
5. Provide support and communication
6. Translate technical documents to plain English

It is to be noted that specific deliverables are not identified as part of this proposed list.

³ <http://location.defra.gov.uk/2010/04/announcement-on-wider-access-to-data-from-ordnance-survey-and-its-role-in-inspire/>

4. GEMINI VERSION 2.0

The MWG will seek to take on the configuration management of GEMINI2. Configuration management is a PRINCE2 term meaning design, support and maintenance. GEMINI2 is currently owned by AGI. UKLP will approach AGI to arrange a formal hand over.

Existing INSPIRE technical guidelines for metadata⁴ is being revised and is expected to be published on 15th April 2010. It will have implications for GEMINI2 in addition to other issues around GEMINI2 which are already known within the group. Consequently a sub-group of the MWG has been formed to address these issues and amend GEMINI2. Note that the view is that the amendments will be slight – there is not scope for a radical overhaul of GEMINI2. James Rapaport is a member of the sub-group and will represent the views of MEDIN. Members of the MEDIN standards group are requested to forward comments about GEMINI2 by 27th April 2010. The meeting is currently scheduled for 29th April 2010.

5. POSITION PAPERS

At the first meeting of the MWG a series of position papers were commissioned. James Rapaport undertook to write the XML encoding paper, considering XML schemas and Schematron. A version of this paper has been distributed to MEDIN standards committee members. The plan is to update this paper and release a version 1.0 of the paper on 23rd April 2010. This version will be distributed to the MEDIN committee.

6. TOOLS

A sub-group has been formed to develop a statement of requirements for an application to support metadata creation and publishing. The high level requirements are:

1. To support metadata editing
2. To support database storage of metadata
3. To support publishing of metadata via a standard interface (e.g. CS-W)
4. To support the UKLP metadata standard and encoding (i.e. GEMINI2 and ISO 19139, ISO 19136 and ISO 19119 XML)
5. To support quality control of metadata (i.e. to implement schema and Schematron validation)
6. To be open source

The tool is intended to replace MetaGenie but clearly the scope of the tool is wider than MetaGenie.

7. FUTURE MEETINGS

The schedule of meetings is currently as follows:

1. 29th April 2010 (GEMINI2 sub-group)
2. 3rd June 2010 (MWG)
3. 12th August 2010 (MWG)
4. 21st October 2010 (MWG)

⁴ http://inspire.jrc.ec.europa.eu/reports/ImplementingRules/metadata/MD_IR_and_ISO_20090218.pdf

Annex A Metadata Working Group

A.1 Terms of Reference

Provide advice to UKLP

Resolve technical issues

Commission guidance

Interface with the European Council Metadata Working Group

Provide support and communication

Translate technical documents to plain English

A.2 Membership

Table 2 – MWG Membership

Member	Representing
Nathan Carr (NC)	Local Government Association (LGA)
Tim Duffy (TD)	British Geological Survey
Phil Francis (PF)	NUAG (Informed Solutions)
Rod Kedge (RK)	Welsh Assembly Government (WAG)
Ross Mackintosh (RM)	Environment Agency (EA)
Tim Manning (TM)	UKLP
Keith Murray (KM)	UKLP
Kay Pallaris (KP)	Olympic Delivery Authority (ODA)
James Rapaport (JR)	MEDIN
Anne Robertson (AR)	Edina
Carsten Roensdorf (CR)	Ordnance Survey (OS)
Gil Ross (GR)	Meteorological Office
Jonathan Sloan (JS)	Devolved Administrations
Rob Walker (RW)	Independent consultant (GEMINI2 principal author)
Michael Warner (MW)	Ministry of Defence

A.3 Attendees at the 3rd Meeting

TM (Chair)

TD

AR

JR

PF

RW

NC

RM

RK